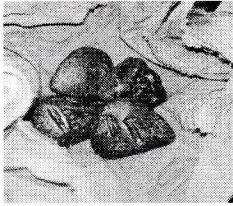


E21

Curse of the Mummy wedges:



in of with , ,

Define wedge: Something that serves to part, split or divide, etc.

Examples:

If you wedge a rock between the door and its frame, it will stay open.

The quarrel drove a wedge into the party's organization.

extra stuff

The spider *in your helmet* is black.

The mummy *of the cave* is really creepy.

The cave *with writing on the walls* is old.

The cave, *an ancient rock structure*, is old.

